



## NiceVision eXpress

NiceVision eXpress is a high-end open IP video management solution tailored for systems up to 64 cameras. Statistically the majority of video security installations are under 64 cameras, but they are no less critical than one with thousands. eXpress shares the same DNA as NiceVision Enterprise, which has been used for years in demanding multi-site multi-thousand camera installations around the world.

With NiceVision eXpress, Professional and Enterprise, System Integrators can now master one core video management system for any size project without recertification. Learn how NiceVision eXpress can meet your project needs today, with the flexibility to grow as your requirements evolve.

## Complete

NiceVision eXpress (NVX) is available as a compact completely self-contained single-server solution which includes the most popular NICE Enterprise features. The NVX platform is easily expanded to add additional features, and simple license upgrades grow your project to a NICE Professional or Enterprise deployment.

NVX offers flexible deployment options, available as a turnkey or software-only solution. Turnkey NVX includes 8TB of internal RAID storage (or 2TB / 4TB non-RAID), which runs on optimized brand-name IT hardware, and the convenient all-in-one solution comes pre-loaded and ready to go, simplifying installation and maintenance.

NVX is also available as a software-kit, which gives you the flexibility to install it on your own computer servers, storage and workstations.

## Open

The open architecture of NiceVision eXpress works with a wide range of IP cameras (including Standard Definition, HD and Megapixel), encoders, and analog cameras from the world's leading edge-device manufacturers. NVX also works with leading access control and other 3rd-party systems and includes the NiceVision Software Development Kit for additional integration requirements.

## Reliable

It's hard to quantify reliability. How can you conclude whether one video management system is more reliable than another? NiceVision Professional and Enterprise's DNA is derived from a long history of large and distributed systems, and their owners are among the most demanding and exacting in the world. NiceVision eXpress has the same DNA, but packaged for simplicity and convenience. For example, the same award-winning encoder redundancy used in many of our Professional and Enterprise projects is also available for NVX. And while NiceVision eXpress is specifically engineered to be a reliable and stable system, you can upgrade the system to incorporate additional resiliency features. These include SVR failover, Central Server (Application Management Software) failover, direct streaming and multicast, level of service and dual recording.

## Evolutionary

NiceVision eXpress can be expanded at any time, so you can start with only 16 cameras and upgrade to 32, 48 or 64 cameras by simply adding license packages. Further expansion is made simple with license upgrades to NiceVision Professional (up to 200 cameras) or NiceVision Enterprise (unlimited cameras). When used with encoders, or in its hybrid form, NVX also enables your migration from analog to IP, maximizing the use of your existing analog infrastructure. Additionally, NVX expansions allow you to reuse existing hardware and storage. The only change in an expansion is the software key, which unlocks higher camera counts and other features such as recorder failover, LDAP, video analytics, and PDA access.



## Architecture

To understand how NVX differs from NiceVision Professional and Enterprise it is useful to know that all NiceVision-based video management systems (not just NVX) are comprised of 5 simple elements: edge devices, recorders, management software, client software and the virtual matrix.

1. Edge devices such as fixed and PTZ IP cameras and encoder-enabled analog cameras. IP cameras include HD and Megapixel cameras.
2. NICE "Smart Video Recorders" (SVRs) include a wide range of value-added services such as video analytics, camera tampering detection and visual parameter optimization (improving the brightness, contrast and saturation of the video on-the-fly).
3. The Application Management Server (AMS) centralizes and coordinates system administrative features like users and privileges, recorder failover, alarm management, PTZ priorities and health monitoring. The AMS also enables NiceVision integrations to 3rd party systems such as Access control – this is referred to as an SDK connection.
4. The NiceVision suite of client applications includes NiceVision Control Center for live surveillance, Investigator for review, reporting and evidence production, SiteBuilder for configuration, and Supervision for health monitoring. Other applications include Player for review and Administrator for managing profiles and privileges.
5. The virtual matrix enables live or recorded video to appear on a remote PC workstation or decoder appliance's typically large monitor. Each display on a PC or NVD 5104 can present up to 16 cameras (4x4).

NiceVision eXpress shares the same DNA as Enterprise, so it is compatible with the same edge devices and 3rd party systems as NiceVision Professional and Enterprise.

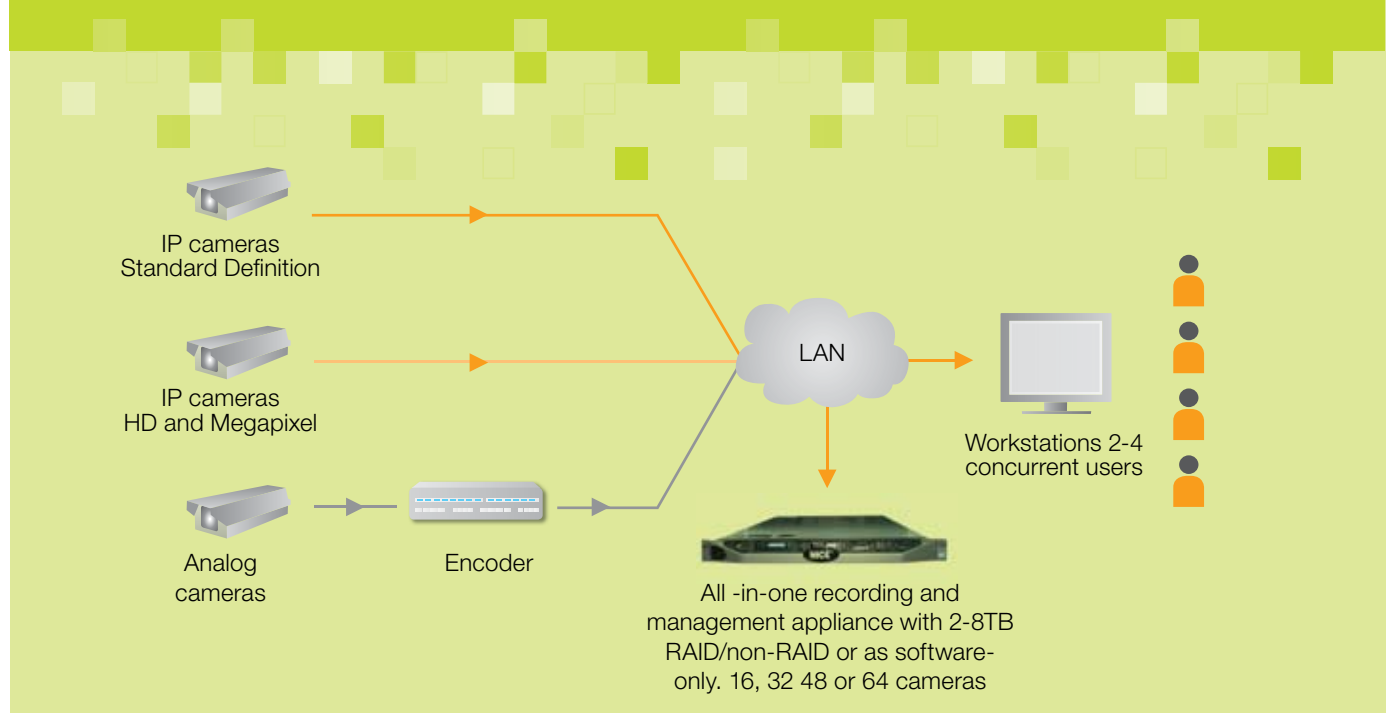
Partner	SD IP Cameras	HD/MP Cameras	Encoders
NICE	N/A	N/A	✓
Arecont	✓	✓	
Axis	✓	✓	✓
Bosch	✓	N/A	✓
Canon	✓	N/A	N/A
Ganz	✓	N/A	N/A
GE	✓	N/A	N/A
Grandeye	✓	N/A	N/A
HikVision	✓	N/A	N/A
Infinova	✓	✓	N/A
IQinVision	✓	✓	N/A
Mobotix	✓	✓	N/A
Panasonic	✓	✓	N/A
Pelco	✓	✓	
Samsung	✓	N/A	N/A
Siemens	✓	N/A	N/A
Sony	✓	✓	N/A

Compatible camera and encoder manufacturers.

For exact model numbers and supported features see NICE's IP Plug-In Guide

## NiceVision eXpress system architecture

NiceVision eXpress is engineered for simplicity, so the SVR and AMS applications run on the same single server. Designed for up to 64 cameras, only one SVR is required, in fact only one SVR is possible.



The client application suite runs on workstations, so you will need at least one workstation for users. User licensing is based on concurrent users (2 to 4), not physical workstations, so you can have 10 registered users as long as they don't all try to use the system at the same time.

All NiceVision eXpress licenses have a default of zero virtual matrix licenses but up to 2 may be added if required. E.g. for a 32 camera system you could choose to view 16 cameras on each of 2 decoder PCs in a 4x4 layout.

Package		eXpress	Professional	Enterprise
Channels	Max video channels	64	200	Unlimited
	Audio support	Audio-in only	✓	✓
	Advanced video quality pack Vpo & camera tampering	—	✓	✓
	Advanced streaming pack Direct streaming & multicast	—	✓	✓
	SVR redundancy Licensed per source channel	—	✓	✓
	Advanced resilience pack CSS support	—	—	✓
	Video analytics support	—	—	✓
Site	Site management & recording license Including 2 user licenses	✓	✓	✓
	Site redundancy	—	—	✓
	Active directory integration	—	—	✓
	No. of VMX displays	2	Unlimited	Unlimited
	Software deployment tool	—	✓	✓
	SDK support	✓	✓	✓
Users	Application suite features	—	✓	✓
	Concurrent users / web clients	2 (32 ch) / 4 (64 ch)	Up to 20	Unlimited
	Mobile client support	—	—	✓

✓ Optional – extra cost    ✓ Included in channel price

## Features

- Upgradable between 16, 32, 48 or 64 cameras
- Open: supports IP, HD, megapixel and encoder-enabled analog cameras
- Supports H.264, MPEG4 and JPEG cameras
- Storage: 2-8TB internal RAID/non-RAID. 42TB external
- Up to 2 virtual matrix displays
- Direct interface for PTZ keyboard control
- Scenario Reconstruction delivers authenticated evidence
- Full audit-trail of all users' activities
- Integrates directly with 3rd party access control systems

## Benefits

- All-in-one system for ease of installation and maintenance or available as software-only to reuse servers and storage capacity
- Shares NiceVision Enterprise DNA including camera compatibility, uptime, system integration and usability
- Non-proprietary IT-friendly platforms improve serviceability
- Simple, single-line-item pricing
- Upgradable to NiceVision Profession or Enterprise for unlimited cameras and additional features while preserving initial investment

# NiceVision eXpress Ordering Information

## Software Only

The following items are pure software. You will need to supply the storage (42TB max) and servers to run the SVR and the AMS software, which can co-exist on a single server. You will need to supply one or more workstations to administer and operate the system.

Part	Cameras	Concurrent Users	Virtual Matrix Licenses
NV-NVX-16CH	16	2	2
NV-NVX-32CH	32	2	2
NV-NVX-48CH	48	4	2
NV-NVX-64CH	64	4	2

## Turnkey Solutions

The turnkey solutions include a single server preinstalled with the SVR and AMS software. The server includes internal storage with the option of RAID or non-RAID. You will need to supply one or more workstations to administer and operate the system.

\*The estimated days of storage assumes all cameras are being recorded at 1Mbps, 24x7 without using motion recording. Many factors affect the actual bitrate including framerate, resolution, compression algorithm, lighting, scene activity, vibration, PTZ motion and consequently they are all camera and situation dependent. However 1Mbps is a reasonable starting point, with 2Mbps considered as casino quality video. This table is presented for your convenience but for a more accurate estimate please call for a custom quote.

Part	Cameras	Concurrent Users	Capacity TB	Storage	Height	Days*
NV-NVX-9200-16CH-OLS-2TB	16	2	2	Internal	1U	10
NV-NVX-9200-16CH-OLS-4TB	16	2	4	Internal	1U	21
NV-NVX-9200-32CH-OLS-2TB	32	2	2	Internal	1U	5
NV-NVX-9200-32CH-OLS-4TB	32	2	4	Internal	1U	10
NV-NVX-9200-48CH-OLS-4TB	48	4	4	Internal	1U	7
NV-NVX-9420-16CH-RIN5-8TB	16	2	8	Internal RAID	2U	42
NV-NVX-9420-32CH-RIN5-8TB	32	2	8	Internal RAID	2U	21
NV-NVX-9420-48CH-RIN5-8TB	48	4	8	Internal RAID	2U	14
NV-NVX-9420-64CH-RIN5-8TB	64	4	8	Internal RAID	2U	10

Part	Description
NV-NVX-EXP-16CH	16 additional channels expansion kit, up to a maximum of 64
NV-NVX-VMX-1MON	Single VMX monitor license for eXpress package
NV-NVX-SDK-1CC	Single license for SDK concurrent connection (max 10)

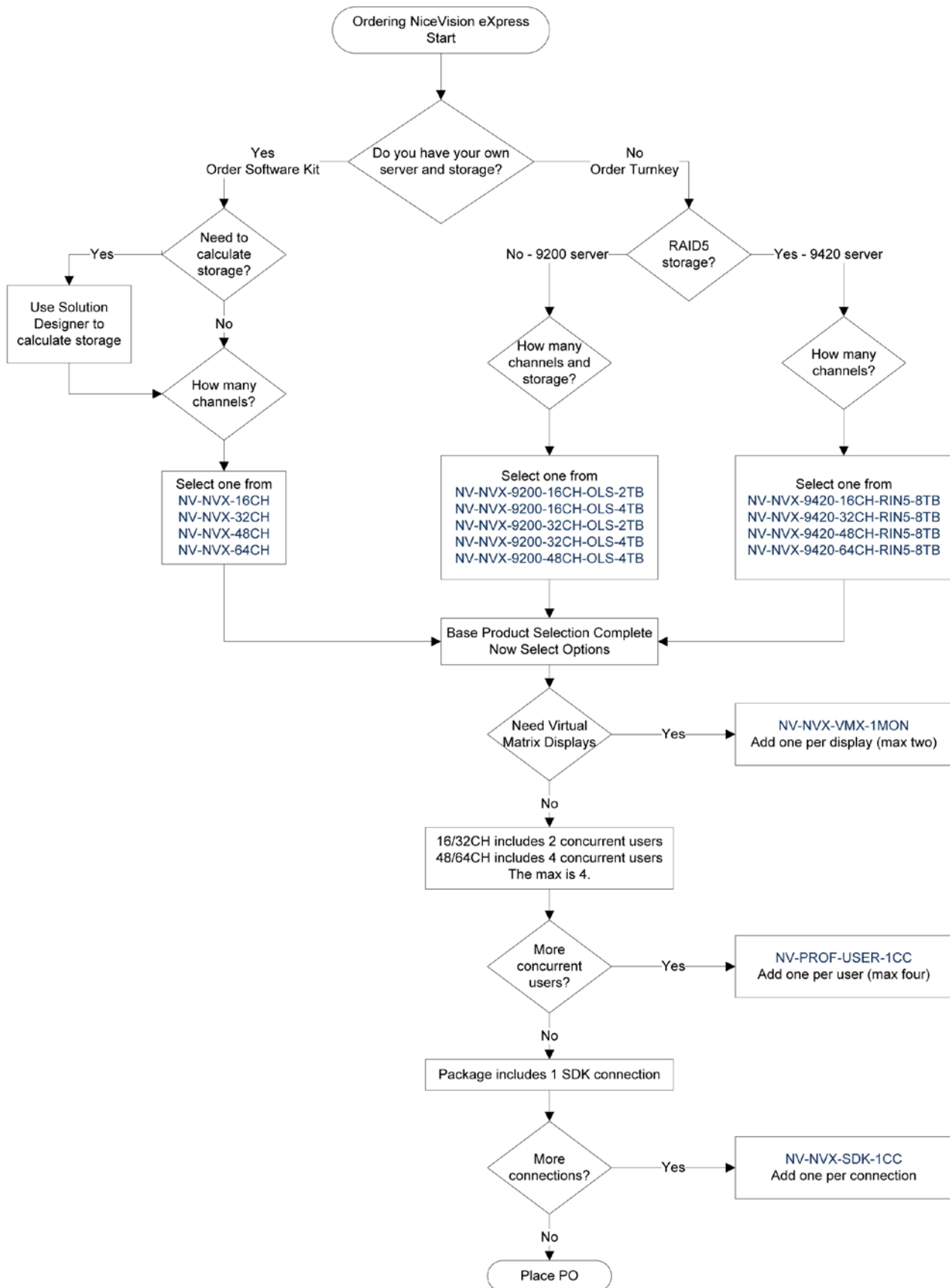
All include one Audio In per channel, and 1 SDK connection.

For full information please consult the NICE pricelist.

Channel Count	SW Kit	Non-RAID Turnkey Platform		RAID5 Turnkey Platform
		2TB	4TB	8TB
16	✓	✓	✓	✓
32	✓	✓	✓	✓
48	✓	—	✓	✓
64	✓	—	—	✓

Various storage options

# Ordering workflow



## Client Workstation System Requirements

Processor type	Intel® Core™2 Quad 525W, Q6600 (1066MHz FSB, Quad Core) or higher. 2.4 GHz (min) with 8 MB L2 Cache
Storage	250 GB (7,200rpm) SATA II Hard Drive or more. DVD-RW to burn DVDs
Memory	4.0 GB (4 x 1.0 GB DIMM) DDR2 ECC SDRAM 667 MHz or more
Video card	NVIDIA PX8400 GS 512 MB or higher
VGA monitor	1024x768 and 32-bit color or higher
Operating system	Windows XP Professional SP3 or Vista SP2 Business edition or Vista SP2 Ultimate edition or Windows Ultimate edition. 64-bit Windows is not supported.

## 64 Cameras Svr/Ams System Requirements (For Software Only)

Processor	Intel® Xeon® Processor E5620 (12M Cache, 2.40 GHz, 5.86 GT/s Intel® QPI)
Memory	3 GB DDR3 or more
Free disk space	180 GB
OS disk	Hot swappable RAID 1 or better is recommended
PSU	Redundant PSU is recommended
Network	1 Gb Ethernet
Modem 56K	Recommended as access point for maintenance
Operating system	Windows Server 2003 R2 Std. Edition (SP2) or Server 2008 R2 Std. Edition

## 32 Cameras Svr/Ams System Requirements (For Software Only)

Processor	Intel® Xeon® Processor X3440 (8M Cache, 2.53 GHz)
Memory	4 GB DDR2 or more
Free disk space	180 GB
OS disk	Hot swappable RAID 1 or better is recommended
PSU	Redundant PSU is recommended
Network	1 Gb Ethernet
Modem 56K	Recommended as access point for maintenance
Operating system	Windows Server 2003 R2 Std. Edition (SP2) or Server 2008 R2 Std. Edition



## ABOUT NICE

NICE Systems (NASDAQ: NICE), is the worldwide leader of intent-based solutions that capture and analyze interactions and transactions, realize intent, and extract and leverage insights to deliver impact in real time. Driven by cross-channel and multi-sensor analytics, NICE solutions enable organizations to improve business performance, increase operational efficiency, prevent financial crime, ensure compliance, and enhance safety and security. NICE serves over 25,000 organizations in the enterprise and security sectors, representing a variety of sizes and industries in more than 150 countries, and including over 80 of the Fortune 100 companies. [www.nice.com](http://www.nice.com).

## ABOUT NiceVision

NiceVision helps leading organizations enhance their security operations and improve performance using intelligent digital video solutions. NiceVision integrates real-time analysis, IP networking, recording and management to enable automatic threat detection, instant verification, event resolution and effective investigation.

## CONTACTS

### Global International HQ, Israel

T +972 9 775 3777, F +972 9 743 4282

### EMEA, Europe & Middle East

T +44 1489 771200, F +44 1489 771665

### Americas, North America

T +1 201 964 2600, F +1 201 964 2610

### APAC, Asia Pacific

T +852 2598 3838, F +852 2802 1800

360° View, Alpha, ACTIMIZE, Actimize logo, Customer Feedback, Dispatcher Assessment, Encoder, eNiceLink, Executive Connect, Executive Insight, FAST, FAST alpha Blue, FAST alpha Silver, FAST Video Security, Freedom, Freedom Connect, IEX, Interaction Capture Unit, Insight from Interactions, Investigator, Last Message Replay, Mirra, My Universe, NICE, NICE logo, NICE Analyzer, NiceCall, NiceCall Focus, NiceCLS, NICE Inform, NICE Learning, NiceLog, NICE Perform, NiceScreen, NICE SmartCenter, NICE Storage Center, NiceTrack, NiceUniverse, NiceUniverse Compact, NiceVision, NiceVision Alto, NiceVision Analytics, NiceVision ControlCenter, NiceVision Digital, NiceVision Harmony, NiceVision Mobile, NiceVision Net, NiceVision NVSAT, NiceVision Pro, Performix, Playback Organizer, Renaissance, Scenario Replay, ScreenSense, Tienna, TotalNet, TotalView, Universe, Wordnet are trademarks and/or registered trademarks of NICE Systems Ltd. All other trademarks are the property of their respective owners. Date 10/2010. Contents of this document are copyright © 2010.